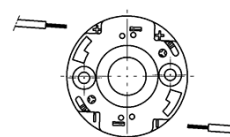
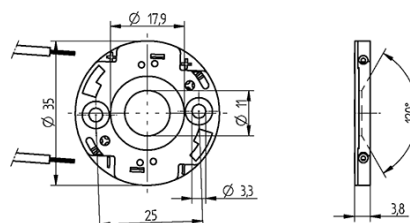




Technology for Light

COB connector Ø 35 mm LED array 15.85 x 15.85 mm 47.360.1030.50



8.0 + 1 mm



0,35-0,5 mm²



0.35-0.5 mm²



Technology for Light

COB connector Ø 35 mm LED array 15.85 x 15.85 mm 47.360.1030.50

DESCRIPTION

With integrated COB holder and interface for reflectors 47.935 and 35.835

Easy pre-assembly of LED

Screw mounting: for screws M3 and locking washer

Max. torque for screw fixing 0.5 Nm*

Strip length: 8+1 mm

Polarity symbols of connector and LED must be observed in assembly

Specification of LED manufacturer must be observed

In a series connection of LED modules, the air gap and creepage distances has to be sized that each module covers the total voltage of the series connection

*Please note the max torque of the COB manufacturer

| | |
|--------------------------|---|
| Product name: | COB connector Ø 35 mm LED array 15.85 x 15.85 mm |
| Mounting method 1: | Screw mount |
| Mounting method 2: | P2F fixing with 28.902.-102 |
| Mounting method 3: | Tip for fastening by screws: The screw chamber of the 47.360 series has a height of 1.9 mm. The screw head must not be higher, otherwise the reflector will fit poorly or not at all. |
| Prefixation of COB: | Yes |
| Material: | Housing: PBT Contacts: CuSn |
| LED manufacturer: | Bridgelux, Cree |
| LED Typ: | CXA/CXB 15xx, H9 |
| Conductor cross-section: | 0.35-0.5 mm ² |
| Rating: | Rating: 3A / 150 VDC |
| Weight: | 2.9 |
| Pkg.: | 840 |

Suitable for the following LED models:

| LED Manufacturer | LED Type | More Information |
|------------------|--------------|---|
| Cree | CXA/CXB 15xx | http://www.cree.com |
| Bridgelux | H9 | http://www.bridgelux.com |