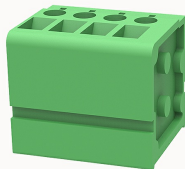


Overview

Product information



DG105V-5.0-10040000081

PCB terminal blocks, Rated current: 24A, Rated voltage (III/2) 250V, Cross section: 0.5~2.5mm², pitch: 5.0mm, connector method: Front screw connector, Color: green, Contact surface : Tin

Product advantages

- ☒ Universal connection method to ensure a high degree of flexibility in device design
- ☒ Two solder pins reduce mechanical stress on solder joints
- ☒ Different poles can be combined through the side lock

Product certification



Technical data

Product drawing

3D model

□

Processing notes

Process

Wave soldering/manual soldering

Connection capacity

Conductor cross section solid

0.5~2.5mm²

Conductor cross section flexible

0.5~2.5mm²

AWG

30~12AWG

Torque

0.4N.m

Strip length

12mm

Electrical parameters UL

Rated voltage (B)	300V
Rated voltage (D)	300V
Rated current (B)	20A
Rated current (D)	10A

Electrical parameters IEC

Rated voltage	250V
Rated current	24A
Rated current(III/2)	250V
Rated surge voltage(III/2)	2KV

Item properties

Connection direction	90°
Type of installation	PCB welding
Pin arrangement	Double-row in a straight line
Connection method	Screw connection
Screwdriver	Slotted screwdriver
screw thread	M2.5
Pitch	5mm
Number of potentials	4
Pluggable or not	no
Number of rows	1

Material data

Environmental items	Compliant with REACH/RoHS
Contact material	copper
Contact point metal surface	tin-plated
Insulation Materials	PA66

Insulating material group	I
Flammability rating	UL94V-0
Mechanical tests	
Test Specification	UL1059/IEC60998
Environmental data	
Ambient temperature (operation)	-40℃~105℃

Accessories	
Tool	
Screwdriver	0.6x3.5mm, Slotted screwdriver
Operating tool	/
Accessories	
Coding strip	/
Bridge	DG019-5.0
Marking strip	/
Others	/

Business data	
Order number	10040000081
Packing unit	475
Minimum order quantity	30
Products weight (without packaging)	14.049