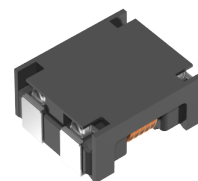


ACM7060-301-2PL-TL01



Applications	Commercial Grade
Feature	Wire Wound Power Line
Series	ACM
Status	Production
Brand	TDK



Size	
Length(L)	7.00mm ±0.20mm
Width(W)	6.00mm ±0.20mm
Thickness Height	3.50mm Max.

Electrical Characteristics	
Common-mode Impedance [Typ.]	300Ω at 100MHz
Common-mode Impedance [Min.]	225Ω at 100MHz
Common-mode Inductance	600nH at 1MHz (Ref.)
Rated Current	5A
Rated Voltage	80VDC
Insulation Resistance [Min.]	10MΩ
DC Resistance	10mΩ Max.

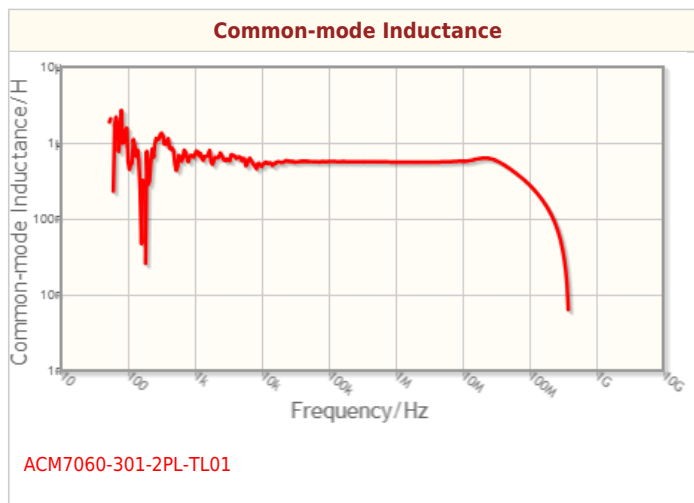
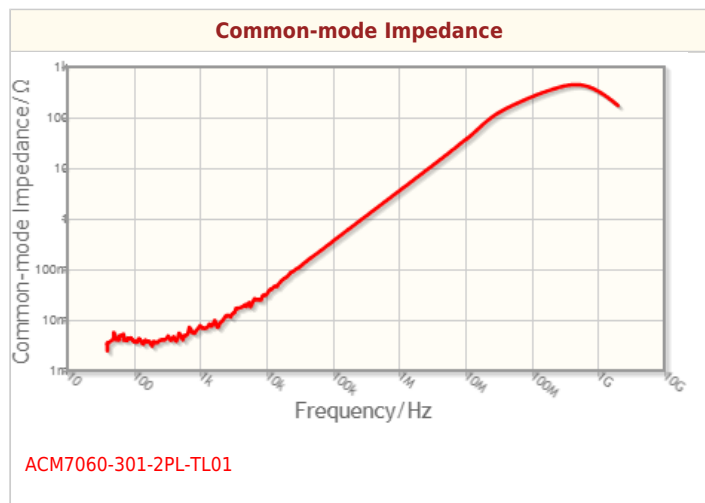
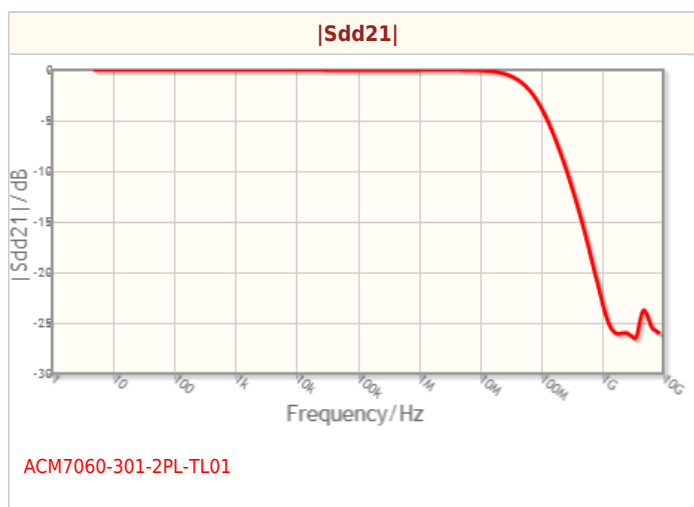
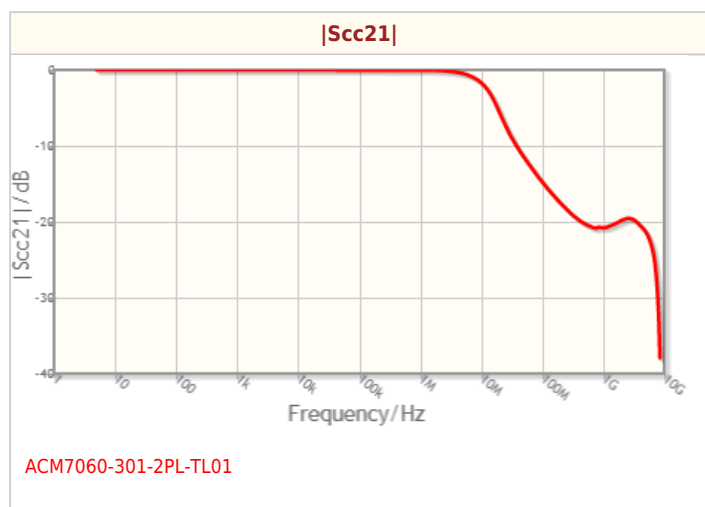
Other	
Operating Temp. Range	-40 to 85°C
Soldering Method	Reflow Iron Soldering
AEC-Q200	No
Packing	Embossed (Plastic)Taping [330mm Reel, Tape width 16mm]
Package Quantity	1500pcs
Weight	0.35g

! Images are for reference only and show exemplary products.
! This PDF document was created based on the data listed on the TDK Corporation website.
! All specifications are subject to change without notice.

ACM7060-301-2PL-TL01



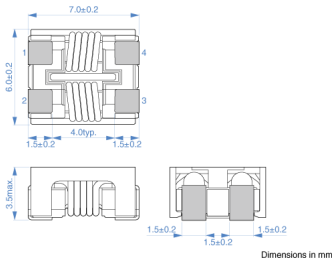
Characteristic Graphs(This is reference data, and does not guarantee the products characteristics.)



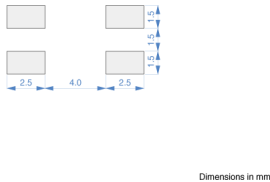


Associated Images

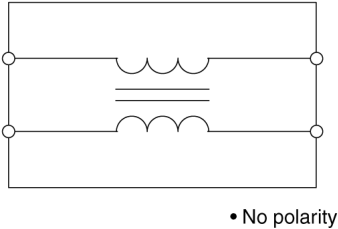
Shapes and Dimensions



Land Pattern (Terminal Connection)



Circuit Diagram



• No polarity