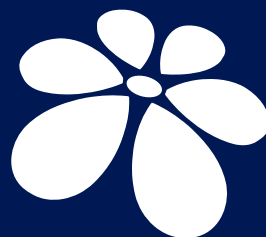
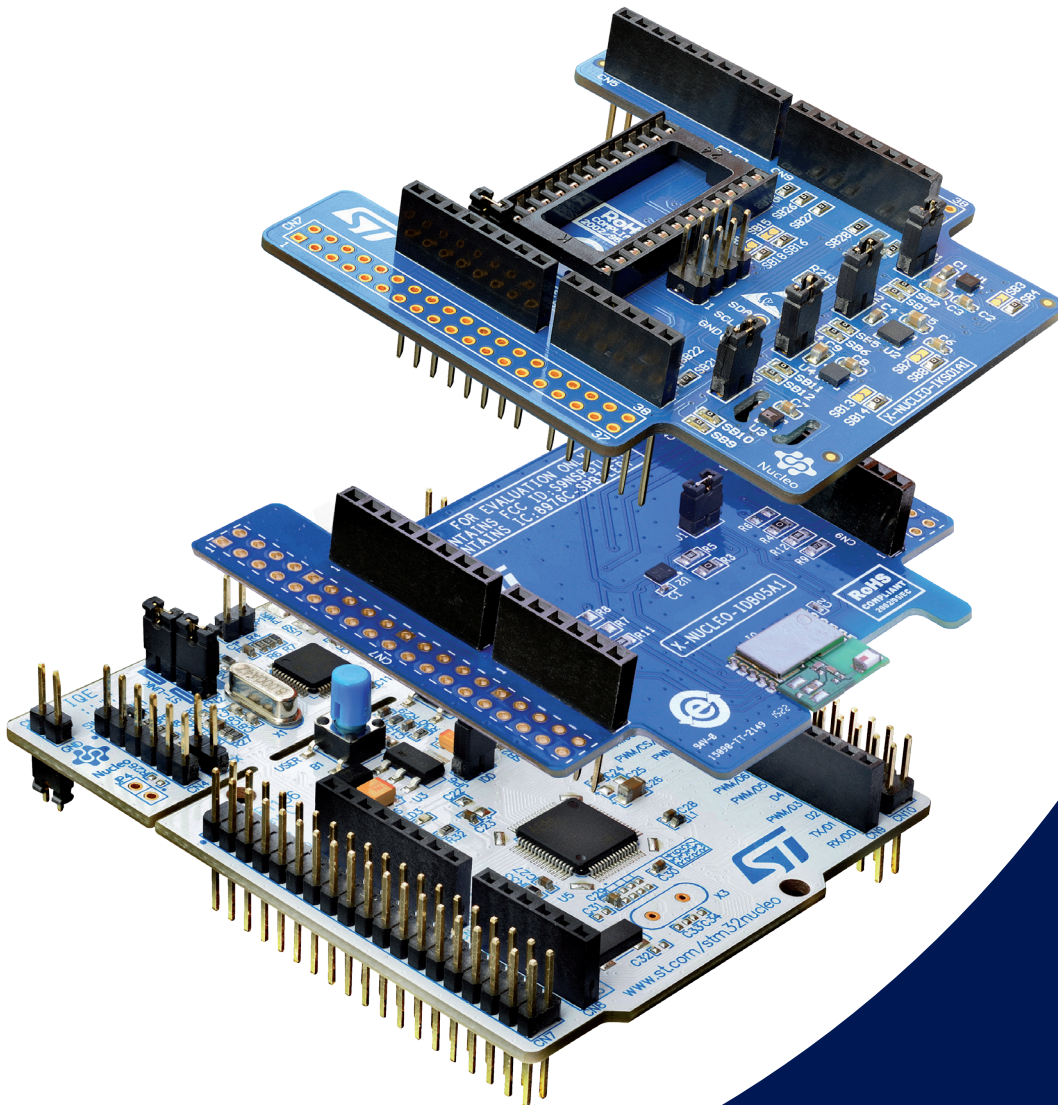


STM32 Open Development Environment



STM32 Open
Development
Environment

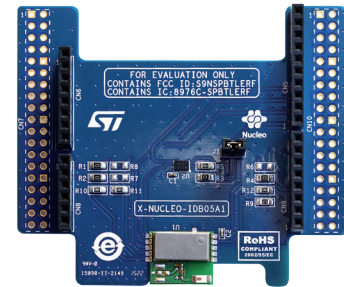
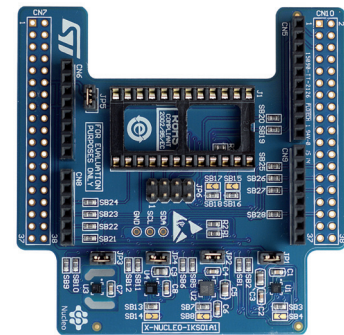
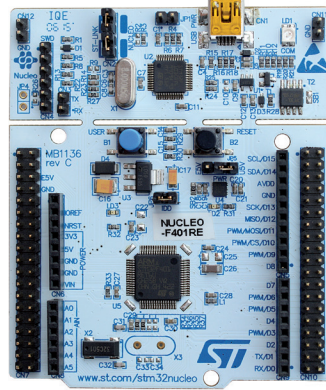


Fast, affordable Development and prototyping

The STM32 Open Development Environment is a fast and affordable way to develop and prototype innovative devices and applications with state-of-the-art ST components leveraging the STM32 32-bit microcontroller family and a comprehensive set of functions for sensing, connectivity, power, audio, motor control and more. The combination of a broad range of expandable boards based on leading-edge commercial products and modular software, from driver to application level, enables fast prototyping of ideas that can be smoothly transformed into final designs.



To start your design, choose the appropriate STM32 Nucleo development board (MCU) and expansion (X-NUCLEO) boards (sensors, connectivity, audio, motor control etc.) for the functionality you need. (Refer to www.st.com/stm32ode for details of board availability and out-of-the-box compatibility.)



2



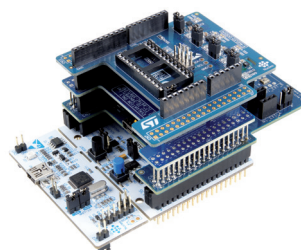
Next select your **development environment** (IAR EWARM, Keil MDK, and GCC-based IDEs) and use the free **STM32Cube tools and software**.

Download all the necessary software to run the functionality on the selected STM32 Nucleo expansion boards.

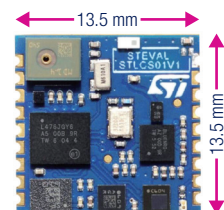


Compile your design and upload it to the STM32 Nucleo development board. Then start developing and testing your application.

Software developed on the STM32 Open Development Environment prototyping hardware can be directly used in an advanced prototyping board or in an end product design using the same commercial ST components, or components from the same family as those found on the STM32 Nucleo boards.



- Motion MEMS
- Environmental sensors
- MEMS microphone
- Low-power brain
- Sensor fusion
- Bluetooth Smart



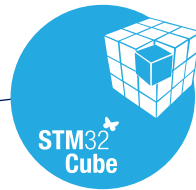


All that you need

The STM32 Open Development Environment consists of a set of stackable boards and a modular open software environment designed around the STM32 microcontroller family.

Developer community and support

Online communities, development tools, documentation and user guides



Function Packs

Set of function examples for some of the most common application cases

STM32Cube software

A set of free tools and embedded software bricks to enable fast and easy development on the STM32, including a Hardware Abstraction Layer and middleware bricks.

STM32Cube expansion software

Expansion software provided free for use with the STM32 Nucleo expansion board and fully compatible with the STM32Cube software framework. It provides abstracted access to expansion board functionality through high-level APIs and sample applications.

STM32 Nucleo development boards

A comprehensive range of affordable development boards for all the STM32 microcontroller series, with unlimited unified expansion capabilities and integrated debugger/programmer functionality.

STM32 Nucleo expansion boards (X-NUCLEO)

Boards with additional functionality that can be plugged directly on top of the STM32 Nucleo development board or stacked on another STM32 expansion board.



3

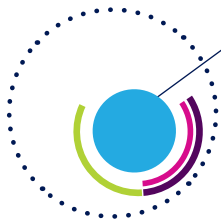
MULTIPLE DEVELOPMENT ENVIRONMENTS

The STM32 Open Development Environment is compatible with a large number of IDEs including those from IAR EWARM and Keil MDK, and also some GCC-based environments.

Some IDEs from leading vendors are provided free of charge, in partnership with ST. These include Eclipse-based IDEs such as AC6 System Workbench for STM32 and the MDK-ARM environment*.

Note: * MDK-ARM is free when used with STM32L0 and STM32F0





STM32 Nucleo boards

THE SKY IS THE LIMIT

Sharing Arduino™ connectors and ST morpho headers, STM32 Nucleo boards can easily be extended with a large number of expansion boards available from ST and from third parties. Stack as many boards as you need to create the functionality required.

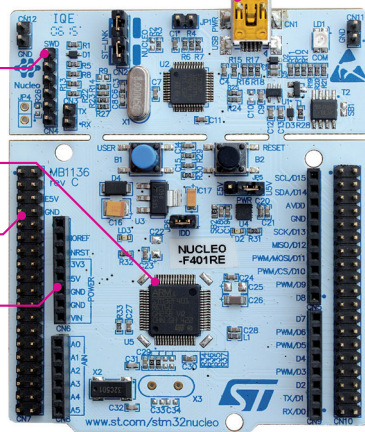
Board power supply through USB or external source

Integrated debugging and programming ST-LINK probe

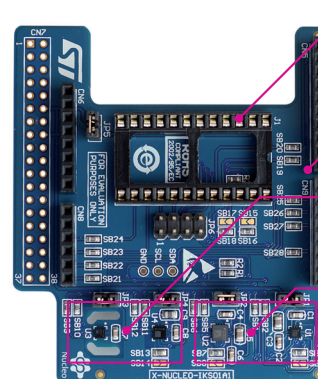
STM32 microcontroller

ST morpho extension header

Arduino™ extension headers



Development board (NUCLEO)



Expansion board (X-NUCLEO)

DIL24 support for new devices

Arduino extension headers

Environmental sensors

Motion sensors

What you want to do	What we provide	Components	Board reference	
Process*	Ultra-low power	STM32L0 - ARM® Cortex®-M0+ ultra-low power 32-bit MCU	NUCLEO-L053R8	
	High performance	STM32F4 - ARM® Cortex®-M4 high-performance 32-bit MCU	NUCLEO-F401RE	
	Rich peripheral set	STM32L4 - ARM® Cortex®-M4 ultra-low power, high-performance 100DMIPS 32-bit MCU with USB-OTG, rich peripheral set and security features	NUCLEO-L476RG	
Sense motion, pressure, humidity, temperature, distance, light, sound	Motion & Environmental sensors	LSM6DS0 3-axis accelerometer + 3-axis gyroscope, LIS3MDL 3-axis magnetometer, HTS221 humidity and temperature, LPS25HB pressure	X-NUCLEO-IKS01A1	
		LSM6DSL 3-axis accelerometer + 3-axis, LSM303AGR 3-axis magnetometer + 3-axis accelerometer, HTS221 humidity and temperature, LPS22HB pressure	X-NUCLEO-IKS01A2	
	Proximity sensors	VL6180X FlightSense™ proximity, gesture and ambient light sensor	X-NUCLEO-6180XA1	
		VL53LOX FlightSense™ ranging and gesture sensor	X-NUCLEO-53LOA1	
Connect	Microphone	MP34DT01-M digital microphone	X-NUCLEO-CCA02M1	
	Bluetooth Low Energy 4.1	BlueNRG-MS based Bluetooth Low Energy (V4.1) module	X-NUCLEO-IDB05A1	
	Wi-Fi	Wi-Fi module (SPWF01SA.11)	X-NUCLEO-IDW01M1	
		Wi-Fi module (SPWF04S)	X-NUCLEO-IDW04A1	
	Sub-GHz radio	SPIRIT1 RF SPSGRF-868 module	X-NUCLEO-IDS01A4	
		SPIRIT1 RF SPSGRF-915 module	X-NUCLEO-IDS01A5	
	NFC	M24SR Dynamic NFC tag M24LR Dynamic NFC tag CR95HF NFC reader	X-NUCLEO-NFC01A1 X-NUCLEO-NFC02A1 X-NUCLEO-NFC03A1	
Move/Actuate	Modem	ST25DV Dynamic NFC/RFID tag ST7580 Power line communication	X-NUCLEO-NFC04A1 X-NUCLEO-PLM01A1	
	Motor driver		L6474 Stepper motor driver	X-NUCLEO-IHM01A1
			L6470 Two Axes motor driver	X-NUCLEO-IHM02A1
			PowerSTEP01 High-power stepper motor driver	X-NUCLEO-IHM03A1
			L6206 Dual brush DC motor driver	X-NUCLEO-IHM04A1
			L6208 Bipolar Stepper motor driver	X-NUCLEO-IHM05A1
			STSPIN220 Low-voltage stepper motor driver	X-NUCLEO-IHM06A1
			L6230 3-phase Brushless DC motor driver	X-NUCLEO-IHM07M1
			L6470 F7 MOSFET Low-voltage BLDC motor driver	X-NUCLEO-IHM08M1
			Motor control connector	X-NUCLEO-IHM09M1
		STSPIN230 Low-voltage BLDC 3-phase motor driver	X-NUCLEO-IHM11M1	
Power/Drive	Battery and energy management	STSPIN240 Low-voltage dual-brush DC motor driver STSPIN250 Low-voltage DC motor driver	X-NUCLEO-IHM12A1 X-NUCLEO-IHM13A1	
	LED Lighting	VPS2535H 24 V Intelligent power switch LED6001 Single channel LED driver with integrated boost controller	X-NUCLEO-IPS02A1 X-NUCLEO-LED61A1	
Translate signal conditioning	Audio processing	16-channel LED driver board	X-NUCLEO-LED16A1	
	Op Amp	STA350BW High-efficiency digital audio system	X-NUCLEO-CCA01M1	
	Industrial Input/Output	Operational Amplifiers (TSZ124) CLT01 Protected digital termination array and VNI8200XP smart power solid state relay	X-NUCLEO-ICA01A1 X-NUCLEO-PLC01A1	
		ISO8200BQ Industrial digital output	X-NUCLEO-OUT01A1	

Note: * Additional STM32 Nucleo development boards can also be used with firmware adaption

Table as of August 1st 2017. For latest update please refer to www.st.com/x-nucleo



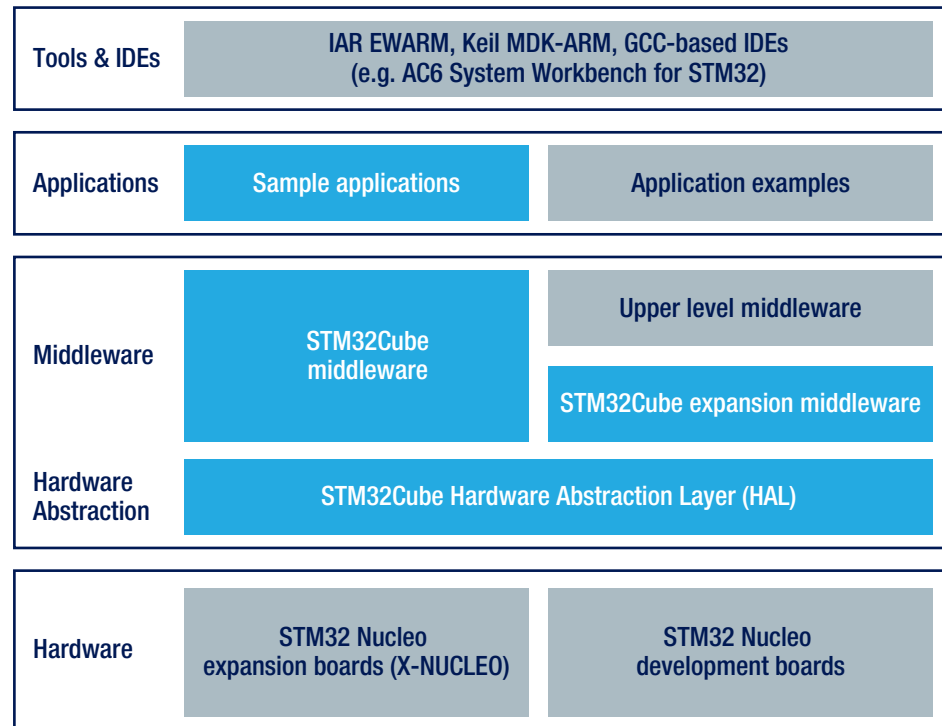
STM32Cube Development Software

STM32Cube is a set of free of charge tools and embedded software bricks to enable fast and easy development on the STM32 which simplifies and speeds up developers' work.

The embedded software bricks include a Hardware Abstraction Layer (HAL) for easy porting from one STM32 device to another and middleware bricks for the most common functions (such as RTOS, USB, file system, TCP/IP stack, touch sensing or graphics).

A large number of code use examples are also included making it even easier to get started.

Find out more www.st.com/stm32cube.



EXPANSION SOFTWARE

All STM32 Nucleo expansion boards come with STM32Cube expansion middleware. The middleware consists of source code drivers and sample applications built on top of the STM32Cube HAL, which provides abstracted access to board functionality through high-level APIs.

OPEN LICENSE MODELS

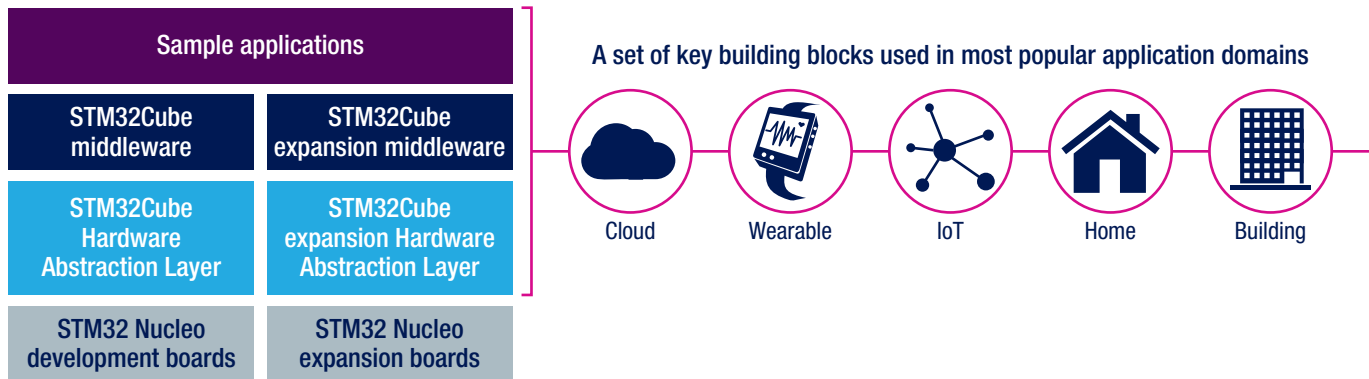
STM32Cube software and sample applications are covered by a mix of fully open source BSD license and ST licenses with very permissive terms.



Function Packs

Pre-integrated applications

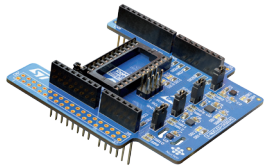
Pre-packaged software offer



FUNCTION PACK EXAMPLE

6

Required Hardware

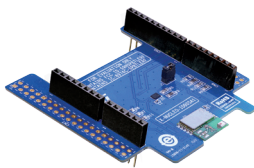


Motion and environmental sensor expansion board

MEMS 3D accelerometer, gyroscope and magnetometer
MEMS pressure and humidity sensors



X-NUCLEO-IKS01A1

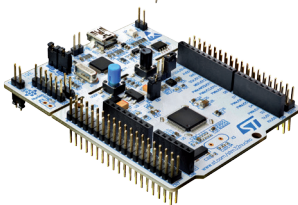


Bluetooth Low Energy expansion board

BlueNRG Bluetooth Low Energy network processor



X-NUCLEO-IDB05A1



STM32 Nucleo-64 development board

STM32F4 MCU



NUCLEO-F401RE

Software

(Free of charge)

FP-SNS-MOTENV1 SW package

Sample applications
(streaming sensor data to Smartphone App)

Bluetooth Low Energy and Sensor software expansions for STM32Cube

X-CUBE-BLE1
X-CUBE-MEMS1

STM32Cube

"ST BlueMS" mobile application



SDK available on Github (BlueSTSDK)

AVAILABLE FUNCTION PACKS

What you want to do	What we provide	Expansion boards supported	Development boards supported	Function pack reference	iOS/Android Application
Local and cloud connectivity	Motion & Environmental sensors, Wi-Fi module and dynamic NFC/RFID tag with Cloud connectivity for Microsoft Cloud services	X-NUCLEO-IDW01M1 X-NUCLEO-IKS01A1 X-NUCLEO-NFC01A1	NUCLEO-F401RE NUCLEO-L476RG	FP-CLD-AZURE1	N/A
	Motion & Environmental sensors, Wi-Fi module and dynamic NFC/RFID tag with Cloud connectivity for Amazon AWS Cloud services	X-NUCLEO-IDW01M1 X-NUCLEO-IKS01A1 X-NUCLEO-NFC01A1	NUCLEO-F401RE	FP-CLD-AWS1	N/A
	Motion & Environmental sensors, Wi-Fi module and dynamic NFC/RFID tag with Cloud connectivity for IBM Cloud services	X-NUCLEO-IDW01M1 X-NUCLEO-IKS01A1 X-NUCLEO-NFC01A1	NUCLEO-F401RE	FP-CLD-WATSON1	N/A
Sensing	Complete solution comprising sensors, NFC, Bluetooth Low Energy connectivity and FlightSense	X-NUCLEO-IDB05A1 X-NUCLEO-IKS01A1 X-NUCLEO-NFC01A1 X-NUCLEO-6180XA1	NUCLEO-F401RE NUCLEO-L476RG	FP-SNS-FLIGHT1	ST BlueMS
	SensorTile compatible package (environmental sensor, motion sensor and digital microphone)	X-NUCLEO-IDB05A1 X-NUCLEO-IKS01A1 X-NUCLEO-CCA02M1	NUCLEO-F401RE NUCLEO-L476RG	FP-SNS-ALLMEMS1	ST BlueMS
	Transmission of sensor data to an application via Bluetooth Low Energy connectivity	X-NUCLEO-IDB05A1 X-NUCLEO-IKS01A1	NUCLEO-F401RE NUCLEO-L476RG NUCLEO-L053R8	FP-SNS-MOTENV1	ST BlueMS
Safety and security	Bluetooth Low Energy pairing through NFC data	X-NUCLEO-IDB05A1 X-NUCLEO-NFC01A1	NUCLEO-F401RE NUCLEO-L053R8	FP-SEC-BLENFC1	ST BlueMS
	Wi-Fi Access Point authentication using information stored in NFC (for headless sensors)	X-NUCLEO-IDW01M1 X-NUCLEO-NFC01A1	NUCLEO-F401RE	FP-SEC-WIFINFC1	ST M24SR
Network infrastructure	Bluetooth Low Energy star-topology to Wi-Fi network conversion function	X-NUCLEO-IDB05A1 X-NUCLEO-IDW01M1	NUCLEO-F401RE NUCLEO-L476RG NUCLEO-L053R8	FP-NET-BLESTAR1	ST SensNet
	6LoWPAN SubGHz to Bluetooth Low Energy network conversion function	X-NUCLEO-IDS01A4/A5 X-NUCLEO-IDB05A1	NUCLEO-F401RE	FP-NET-6LPBLE1	N/A
	6LoWPAN SubGHz to Wi-Fi network conversion function	X-NUCLEO-IDS01A4/A5 X-NUCLEO-IDW01M1	NUCLEO-F401RE	FP-NET-6LPWIFI1	N/A
	6LoWPAN SubGHz nodes based on the IPSO standard	X-NUCLEO-IDS01A4/A5 X-NUCLEO-6180XA1 X-NUCLEO-IKS01A2	NUCLEO-F401RE NUCLEO-L152RE	FP-SNS-6LPNODE1	N/A
Audio	Voice streaming over Bluetooth Low Energy in a half-duplex configuration	X-NUCLEO-IDB05A1 X-NUCLEO-CCA02M1	NUCLEO-F401RE	FP-AUD-BVLINK1	ST BlueMS
	Advanced processing for MEMS microphone arrays, including digital MEMS microphone acquisition, beamforming, source localization and acoustic echo cancellation.	X-NUCLEO-CCA01M1 X-NUCLEO-CCA02M1	NUCLEO-F446RE	FP-AUD-SMARTMIC1	N/A

Table as of August 1st 2017. For latest update please refer to www.st.com/stm32ode-fp

CHOOSE YOUR APPLICATION

Select an STM32 Nucleo development board* and add the expansion boards required (as mentioned in the table above).

Go to www.st.com/stm32ode-fp and download the function pack (containing a pre-configured STM32Cube and expansion software) to get your application up and running quickly.

Note: * Additional STM32 Nucleo development boards can also be used with firmware adaption, to take advantage of the whole STM32 microcontroller portfolio (as of August 1st 2017, 29 STM32 Nucleo development boards, allowing the evaluation of more than 600 STM32 part numbers).

life.augmented



© STMicroelectronics - August 2017 - Printed in United Kingdom - All rights reserved
The STMicroelectronics corporate logo is a registered trademark of the STMicroelectronics group of companies
All other names are the property of their respective owners

